



GAS CAM

Passive Remote Gas Detector

About Us

Established in 1984, Airwave Electronics Ltd. is a Canadian Company based in Alberta specializing in the manufacture and sales of gas detection equipment.

Our product line is extensive, servicing a diversified client base with primary focus in the oil and gas marketplace.

Gas Cam Passive Remote Gas Detector

The prevalence of gas detection systems using open-path methods has dramatically increased over the last ten years. By exploiting the mechanism of absorption of infra-red (IR) electromagnetic energy by the gas moles, it is possible to determine the presence, and quantity, of gas between the detection system and a distant source of IR energy.

The passive remote gas detector is a wide band spectrometer that uses Fourier transform methods operating in the IR (FTIR).



Gas Cam is a complex electro-optic measurement tool that enables detailed spectral analysis of the received energy .

State-of-the-art techniques, devices and materials have been brought together in a robust, portable and simple to use sensor that offers a capability that has been missing from the range of existing detection systems.

Prime examples of these features include:

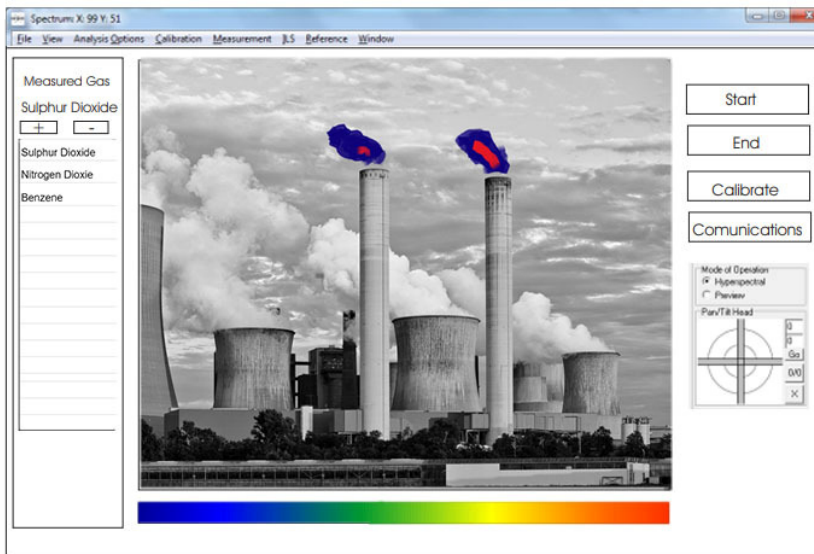
- Compact, rugged and light weight mechanical construction
- Small integrate colour CCD camera
- Miniature high accuracy linear motor
- Highly integrate and low-power electronics
- Complex data processing algorithms
- High-performance robust optics
- High-resolution colour liquid crystal graphics display (LCD)
- Leading-edge semiconductor laser diode
- Power computing and signal processing facilities

Operation

Extremely friendly software routines and clear user-interface allow simple operation as, once set up, the system runs automatically. The operator is then provided with a real-time readout of all measurements on a monitor while the system simultaneously time-stamps and archives the data for later analysis or presentation.

Self-test and diagnostic routines ensure that the instrument alerts the operator should a fault appear, and internal recalibration is used to maintain the credibility and validity of the measurements.

The device is small enough and light enough to be transported by a single operator. It may be mounted on a portable stand such as a tripod, or more permanently secured to a static structure. Whatever the case, this system may be rapidly repositioned around a single site or deployed at another location.



Features

- Non-contact detection
- Instant results
- Proven Technology
- Multiple front panel diagnostics
- Digital display
- Easy to operate
- Minimum maintenance
- Up to 20 spectra signatures in memory

From the simple pellistor, via hand-held flame ionisation detector (FID) and active open-path differential optical absorption spectrometer (DOAS), through the highly complex and expensive LIDAR, the ranges capability of price are vast. However, there has been a gap in the market where non-invasive operation is needed. The Passive Remote Detection System is intended to fill this void and to offer a viable solution to problems previously regarded as insoluble, insignificant, or too expensive.

For More Information

Email: info@gasdetect.com

Phone: (403) 335-9875

Fax: (403) 335-4818

Shipping Address

Airwave Electronics Ltd.

Suite 104, 1610-20th Street

Didsbury, AB, Canada

T0M 0W0

Postal Address

Airwave Electronics Ltd.

Box 2, Site 18, RR#1

Didsbury, AB, Canada

T0M 0W0